

- o Flat Cable Connectors SEK
- o *har-mik®*
- o D-Sub
- o InduCom

Applications



## Product details

**09 03 142 6901**

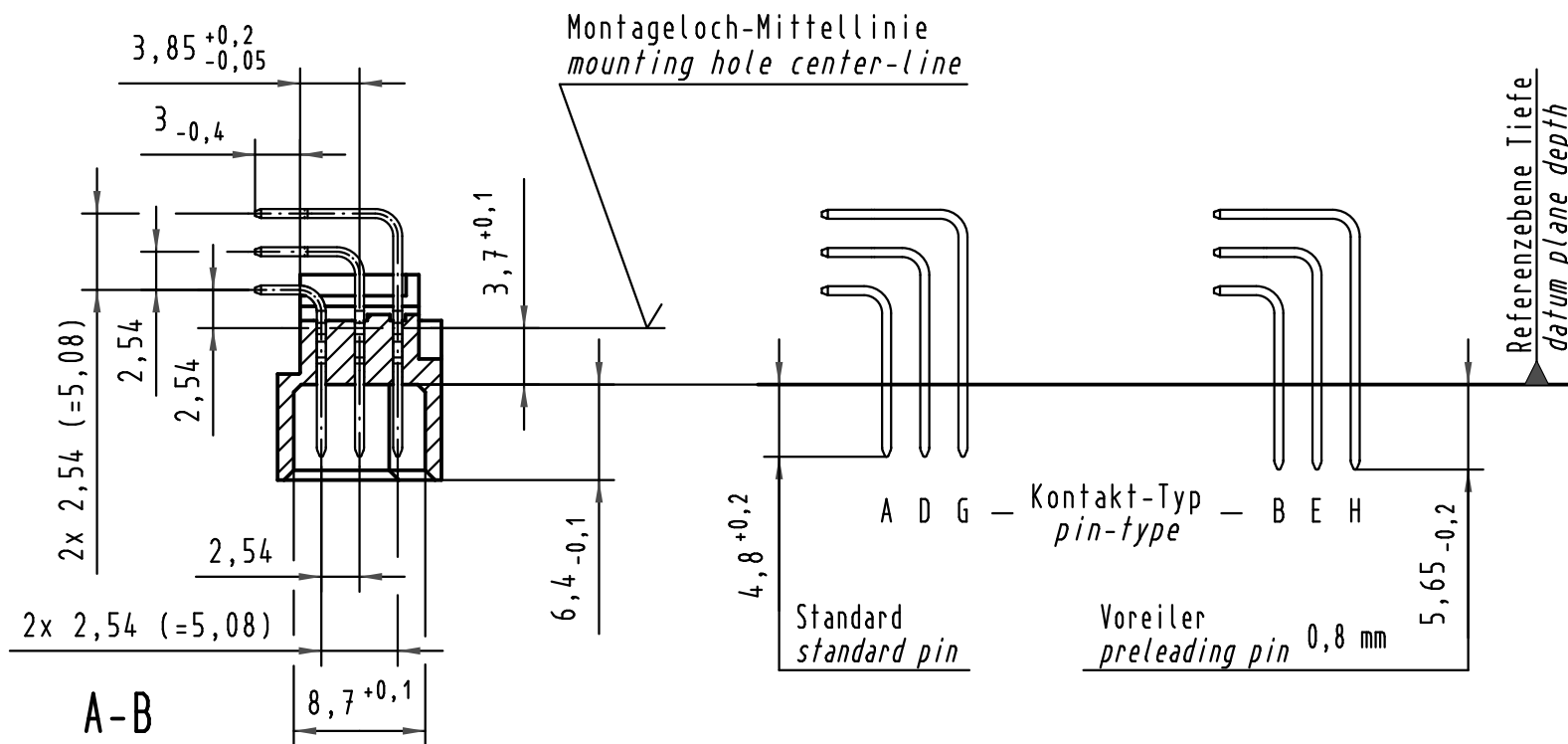
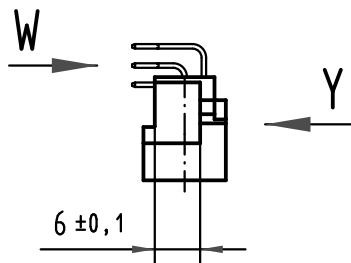
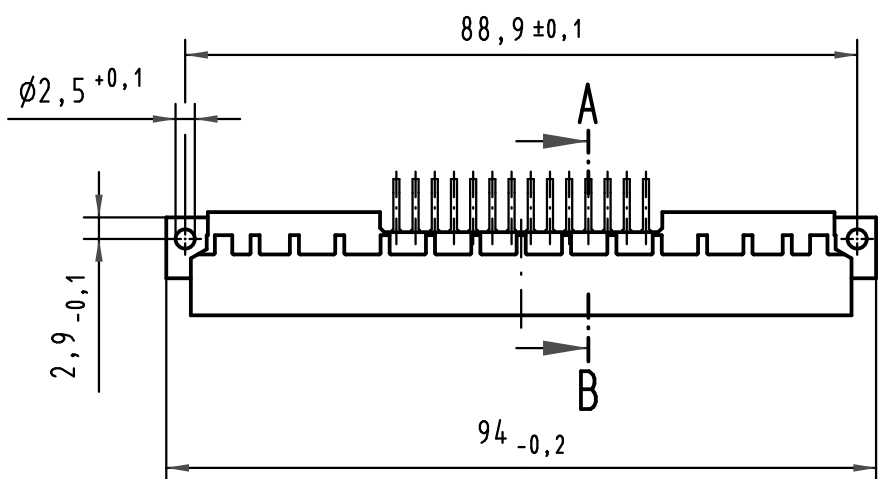
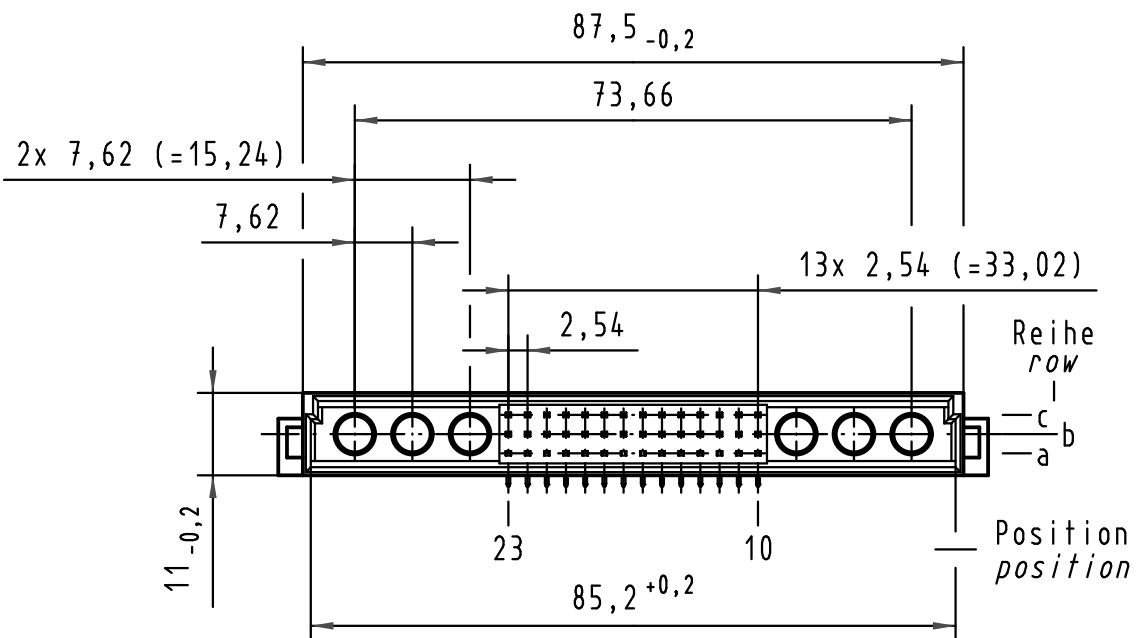
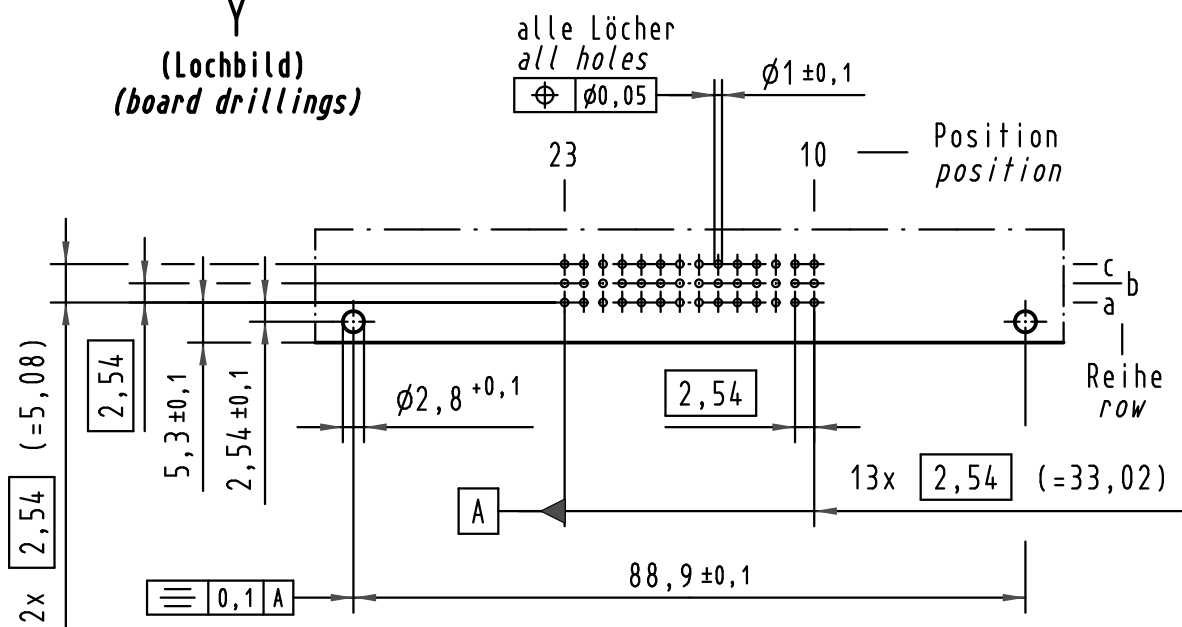
**Printed board connector**

Type	Type M
Standard/Inverse	Standard
Contact gender	Male contacts
Size	Whole size
Number of contacts	42 + 6 high current or coaxial contacts
Contact arrangement	Rows a, b and c
Termination	Angled solder pins
Termination length	3.0 mm
First mating contact	without first mating contacts
Performance Class	Performance level 2 as per IEC 60603-2
Row pitch	2.54 mm
Board fixing	Without fixing
Current	2 A max.
Clearance/ Creepage	1.2 / 1.2 mm min.
RoHS compliant	Yes

**Inquiry**

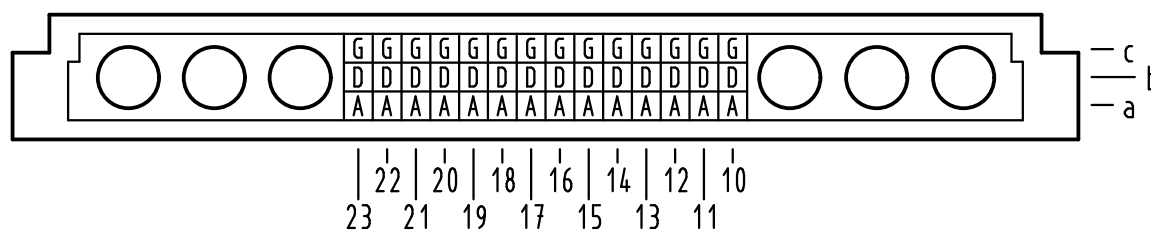
**Available Downloads**

**Y**  
(Lochbild)  
(board drillings)



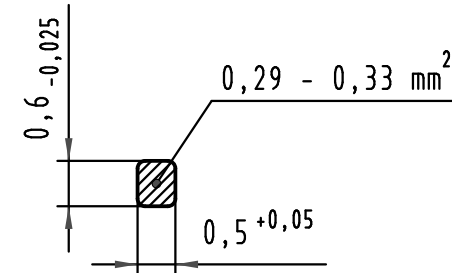
A-B  
2:1

X Kontaktbelegung  
contact loading



**W**  
10:1

Querschnitt der  
Lötanschlüsse:  
cross-section of  
solder terminations:



09 03 142 7901	3	Au über/over Ni
09 03 142 6901	2	Au über/over Ni
09 03 142 2901	1	Au über/over Ni
Bestell-Nr. part-no.	Anforderungsstufe nach IEC performance level acc. to IEC	Kontaktoberfläche contact plating

 All Dimensions in mm Original Size DIN A 3	Techn. Character.			Nicht tolerierte Maß/Free size tolerances IEC 60603-2		
		Dat.	Name	Maßstab/Scale	Bauform M42 Messerleiste Einlöt, 42 pol. type M42 male connector solder, 42 pol.	
		Detail.	24.07.01			Rie.
		Insp.	24.07.01			Pa.
	Stand.			10:1		
34650	11.10.07	Hage.	HARTING Electronics GmbH & Co. KG		TB 09 03 142 x901 Blatt/page	
30016			D-32339 ESPELKAMP			
Mod.	Dat.	Name				

Alle Rechte vorbehalten/ All rights reserved